

Product datasheet for **TA331587**

UBR1 Rabbit Polyclonal Antibody

Product data:

Product Type:	Primary Antibodies
Applications:	WB
Recommended Dilution:	WB
Reactivity:	Human
Host:	Rabbit
Isotype:	IgG
Clonality:	Polyclonal
Immunogen:	The immunogen for Anti-UBR1 Antibody: synthetic peptide directed towards the N terminal of human UBR1. Synthetic peptide located within the following region: YKQLQKEYISDDHRSISITALSVQMFTVPTLARHLIEEQNVISVITETL
Formulation:	Liquid. Purified antibody supplied in 1x PBS buffer with 0.09% (w/v) sodium azide and 2% sucrose. <i>Note that this product is shipped as lyophilized powder to China customers.</i>
Conjugation:	Unconjugated
Storage:	Store at -20°C as received.
Stability:	Stable for 12 months from date of receipt.
Predicted Protein Size:	200 kDa
Gene Name:	ubiquitin protein ligase E3 component n-recognin 1
Database Link:	NP_777576 Entrez Gene 197131 Human Q8I WV7



[View online »](#)

Background:

UBR1 is an E3 ubiquitin-protein ligase which is a component of the N-end rule pathway. Recognizes and binds to proteins bearing specific N-terminal residues that are destabilizing according to the N-end rule, leading to their ubiquitination and subsequent degradation. UBR1 may be involved in pancreatic homeostasis. The N-end rule pathway is one proteolytic pathway of the ubiquitin system. The recognition component of this pathway, encoded by this gene, binds to a destabilizing N-terminal residue of a substrate protein and participates in the formation of a substrate-linked multiubiquitin chain. This leads to the eventual degradation of the substrate protein. The protein described in this record has a RING-type zinc finger and a UBR-type zinc finger. Mutations in this gene have been associated with Johanson-Blizzard syndrome. Publication Note: This RefSeq record includes a subset of the publications that are available for this gene. Please see the Entrez Gene record to access additional publications.

Synonyms:

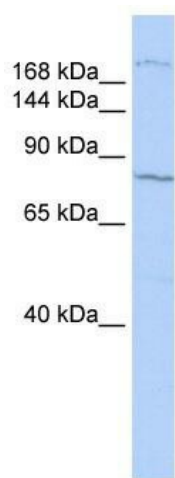
JBS

Note:

Immunogen sequence homology: Dog: 100%; Pig: 100%; Rat: 100%; Human: 100%; Rabbit: 100%; Guinea pig: 100%; Horse: 93%; Mouse: 93%; Bovine: 93%; Yeast: 82%

Protein Families:

Druggable Genome

Product images:

WB Suggested Anti-UBR1 Antibody Titration: 0.2-1 ug/ml; ELISA Titer: 1: 62500; Positive Control: HepG2 cell lysate