

Product datasheet for **TA331585**

PHYHD1 Rabbit Polyclonal Antibody

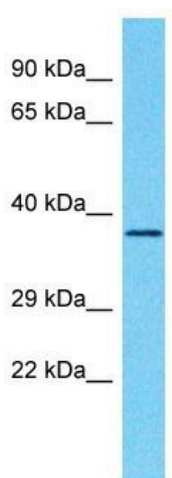
Product data:

Product Type:	Primary Antibodies
Applications:	WB
Recommended Dilution:	WB
Reactivity:	Human
Host:	Rabbit
Isotype:	IgG
Clonality:	Polyclonal
Immunogen:	The immunogen for Anti-PHYHD1 Antibody is: synthetic peptide directed towards the C-terminal region of Human PHYHD1. Synthetic peptide located within the following region: IHGEVVHKSQNLSDRSRQAYTFHLMEASGTTWSPENWLQPTAELPFPQL
Formulation:	Liquid. Purified antibody supplied in 1x PBS buffer with 0.09% (w/v) sodium azide and 2% sucrose. <i>Note that this product is shipped as lyophilized powder to China customers.</i>
Conjugation:	Unconjugated
Storage:	Store at -20°C as received.
Stability:	Stable for 12 months from date of receipt.
Predicted Protein Size:	32 kDa
Gene Name:	phytanoyl-CoA dioxygenase domain containing 1
Database Link:	NP_777593 Entrez Gene 254295 Human Q5SRE7
Background:	Isoform 1 has alpha-ketoglutarate-dependent dioxygenase activity. PHYHD1 does not show detectable activity towards fatty acid CoA thioesters. PHYHD1 is not expected to be active with phytanoyl CoA. Isoform 2 and isoform 3 probably lack enzyme activity.
Synonyms:	MGC16638
Note:	Immunogen sequence homology: Human: 100%; Pig: 93%; Rat: 93%; Bovine: 93%; Dog: 86%; Horse: 86%; Guinea pig: 86%



[View online »](#)

Product images:



Host: Rabbit
Target Name: PHYHD1
Sample Tissue: HCT15 Cell Lysate
Antibody Dilution: 1.0 μ g/ml

Host: Rabbit; Target Name: PHYHD1; Sample
Tissue: HCT15 Whole Cell lysates; Antibody
Dilution: 1.0ug/ml