

## Product datasheet for **TA331584**

### TA3 (TAAR9) Rabbit Polyclonal Antibody

#### Product data:

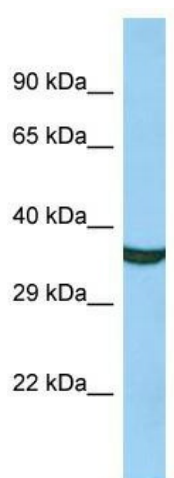
Product Type:	Primary Antibodies
Applications:	WB
Recommended Dilution:	WB
Reactivity:	Human
Host:	Rabbit
Isotype:	IgG
Clonality:	Polyclonal
Immunogen:	The immunogen for Anti-TAAR9 Antibody is: synthetic peptide directed towards the C-terminal region of Human TAAR9. Synthetic peptide located within the following region: RVAKRERKAAKTLGIAMAAFLVSWLPYLVDAAVIDAYMNFITPPYVYEILV
Formulation:	Liquid. Purified antibody supplied in 1x PBS buffer with 0.09% (w/v) sodium azide and 2% sucrose. <i>Note that this product is shipped as lyophilized powder to China customers.</i>
Conjugation:	Unconjugated
Storage:	Store at -20°C as received.
Stability:	Stable for 12 months from date of receipt.
Predicted Protein Size:	39 kDa
Gene Name:	trace amine associated receptor 9 (gene/pseudogene)
Database Link:	<a href="#">NP_778227</a> <a href="#">Entrez Gene 134860 Human</a> <a href="#">Q96RI9</a>
Background:	TAAR9 is a member of a large family of rhodopsin G protein-coupled receptors (GPCRs, or GPRs). GPCRs contain 7 transmembrane domains and transduce extracellular signals through heterotrimeric G proteins.
Synonyms:	TA3; TAR3; TAR9; TRAR3
Note:	Immunogen sequence homology: Dog: 100%; Pig: 100%; Rat: 100%; Horse: 100%; Human: 100%; Mouse: 100%; Bovine: 100%; Rabbit: 100%; Guinea pig: 100%
Protein Families:	Druggable Genome



[View online »](#)

Protein Pathways: Neuroactive ligand-receptor interaction

### Product images:



Host: Rabbit; Target Name: TAAR9; Sample  
Tissue: Fetal Liver lysates; Antibody Dilution:  
1.0ug/ml