

Product datasheet for **TA331582**

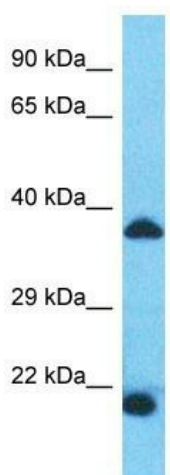
SPDYE1 Rabbit Polyclonal Antibody

Product data:

| | |
|-------------------------|--|
| Product Type: | Primary Antibodies |
| Applications: | WB |
| Recommended Dilution: | WB |
| Reactivity: | Human |
| Host: | Rabbit |
| Isotype: | IgG |
| Clonality: | Polyclonal |
| Immunogen: | The immunogen for Anti-SPDYE1 Antibody is: synthetic peptide directed towards the N-terminal region of Human SPDYE1. Synthetic peptide located within the following region: KREWSDESEEEPEKELAPEPEETWVETLCLGLKMKLKQQRVSPILLEHHK |
| Formulation: | Liquid. Purified antibody supplied in 1x PBS buffer with 0.09% (w/v) sodium azide and 2% sucrose. |
| Conjugation: | Unconjugated |
| Storage: | Store at -20°C as received. |
| Stability: | Stable for 12 months from date of receipt. |
| Predicted Protein Size: | 36 kDa |
| Gene Name: | speedy/RINGO cell cycle regulator family member E1 |
| Database Link: | NP_778234 Entrez Gene 285955 Human Q8NFV5 |
| Background: | This gene is located at chromosome 7p13 which is close to the Williams Beuren syndrome chromosome region 7q11.23. |
| Synonyms: | Ringo1; SPDYE; WBSCR19 |
| Note: | Immunogen sequence homology: Human: 100% |



[View online »](#)

Product images:

Host: Rabbit
Target Name: SPDYE1
Sample Tissue: Fetal Heart Lysate
Antibody Dilution: 1.0 μ g/ml

Host: Rabbit; Target Name: SPDYE1; Sample
Tissue: Fetal Heart lysates; Antibody Dilution:
1.0ug/ml