

Product datasheet for **TA331581**

KRT73 Rabbit Polyclonal Antibody

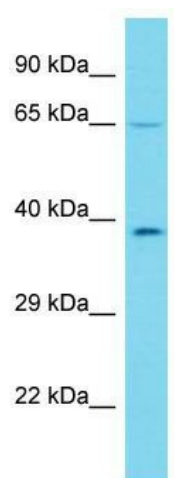
Product data:

Product Type:	Primary Antibodies
Applications:	WB
Recommended Dilution:	WB
Reactivity:	Human
Host:	Rabbit
Isotype:	IgG
Clonality:	Polyclonal
Immunogen:	The immunogen for Anti-KRT73 Antibody is: synthetic peptide directed towards the C-terminal region of Human KRT73. Synthetic peptide located within the following region: YSMLPGGCVTGSGNCSPRGEARTRLGSASEFRDSQGKTLALSSPTKKTMR
Formulation:	Liquid. Purified antibody supplied in 1x PBS buffer with 0.09% (w/v) sodium azide and 2% sucrose. <i>Note that this product is shipped as lyophilized powder to China customers.</i>
Conjugation:	Unconjugated
Storage:	Store at -20°C as received.
Stability:	Stable for 12 months from date of receipt.
Predicted Protein Size:	59 kDa
Gene Name:	keratin 73
Database Link:	NP_778238 Entrez Gene 319101 Human Q86Y46
Background:	Keratins are intermediate filament proteins responsible for the structural integrity of epithelial cells and are subdivided into epithelial keratins and hair keratins. This gene encodes a protein that is expressed in the inner root sheath of hair follicles. The type II keratins are clustered in a region of chromosome 12q13.
Synonyms:	IRT6IRS3; K6IRS3; KRT6IRS3
Note:	Immunogen sequence homology: Human: 100%; Rat: 93%; Bovine: 92%; Dog: 86%; Mouse: 85%



[View online »](#)

Product images:



Host: Rabbit; Target Name: KRT73; Sample Tissue: HepG2 Whole Cell lysates; Antibody Dilution: 1.0ug/ml