

## Product datasheet for TA331580

### Aprataxin Rabbit Polyclonal Antibody

#### Product data:

Product Type:	Primary Antibodies
Applications:	WB
Recommended Dilution:	WB
Reactivity:	Human
Host:	Rabbit
Isotype:	IgG
Clonality:	Polyclonal
Immunogen:	The immunogen for Anti-APTX Antibody: synthetic peptide directed towards the N terminal of human APTX. Synthetic peptide located within the following region: MMRVCLVLRQDSRHQRIRLPHLEAVVIGRGPETKITDKKCSRQQVQLKAE
Formulation:	Liquid. Purified antibody supplied in 1x PBS buffer with 0.09% (w/v) sodium azide and 2% sucrose. <i>Note that this product is shipped as lyophilized powder to China customers.</i>
Conjugation:	Unconjugated
Storage:	Store at -20°C as received.
Stability:	Stable for 12 months from date of receipt.
Predicted Protein Size:	38 kDa
Database Link:	<a href="#">NP_778241</a> <a href="#">Entrez Gene 54840 Human</a>
Background:	APTX is a member of the histidine triad (HIT) superfamily, some of which have nucleotide-binding and diadenosine polyphosphate hydrolase activities. APTX may play a role in single-stranded DNA repair. Mutations in this gene have been associated with ataxia-ocular apraxia. This gene encodes a member of the histidine triad (HIT) superfamily, some of which have nucleotide-binding and diadenosine polyphosphate hydrolase activities. The encoded protein may play a role in single-stranded DNA repair. Mutations in this gene have been associated with ataxia-ocular apraxia. Multiple transcript variants encoding distinct isoforms have been identified for this gene, however, the full length nature of some variants has not been determined.



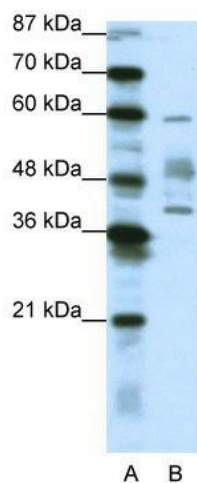
[View online »](#)

**Synonyms:** AOA; AOA1; aprataxin; ataxia 1; AXA1; EAOH; early onset with hypoalbuminemia; EOAHA; FHA-HIT; FLJ20157; MGC1072; OTTHUMP00000021188

**Note:** Immunogen sequence homology: Human: 100%; Rat: 93%; Horse: 93%; Mouse: 93%; Rabbit: 93%; Pig: 86%; Guinea pig: 86%; Dog: 85%

**Protein Families:** Druggable Genome

### Product images:



WB Suggested Anti-APT<sub>X</sub> Antibody Titration:  
1.25ug/ml; ELISA Titer: 1: 1562500; Positive  
Control: NCI-H226 cell lysate