

Product datasheet for **TA331578**

C14orf130 (UBR7) Rabbit Polyclonal Antibody

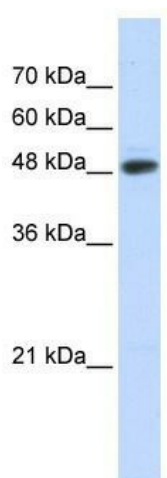
Product data:

Product Type:	Primary Antibodies
Applications:	WB
Recommended Dilution:	WB
Reactivity:	Human
Host:	Rabbit
Isotype:	IgG
Clonality:	Polyclonal
Immunogen:	The immunogen for Anti-C14orf130 Antibody: synthetic peptide directed towards the N terminal of human C14orf130. Synthetic peptide located within the following region: MAGAEGAAGRQSELEPVVSLVDVLEEDEEENEACAVLGGSDSEKCSYSQ
Formulation:	Liquid. Purified antibody supplied in 1x PBS buffer with 0.09% (w/v) sodium azide and 2% sucrose. <i>Note that this product is shipped as lyophilized powder to China customers.</i>
Conjugation:	Unconjugated
Storage:	Store at -20°C as received.
Stability:	Stable for 12 months from date of receipt.
Predicted Protein Size:	48 kDa
Gene Name:	ubiquitin protein ligase E3 component n-recognin 7 (putative)
Database Link:	NP_786924 Entrez Gene 55148 Human Q8N806
Background:	The function remains unknown.
Synonyms:	C14orf130
Note:	Immunogen sequence homology: Dog: 100%; Pig: 100%; Rat: 100%; Horse: 100%; Human: 100%; Mouse: 100%; Bovine: 100%; Rabbit: 100%; Zebrafish: 100%; Guinea pig: 100%; Yeast: 82%
Protein Families:	Druggable Genome



[View online »](#)

Product images:



WB Suggested Anti-C14orf130 Antibody Titration:
0.2-1 ug/ml; ELISA Titer: 1: 62500; Positive
Control: Transfected 293T