

Product datasheet for **TA331576**

DIPK2B Rabbit Polyclonal Antibody

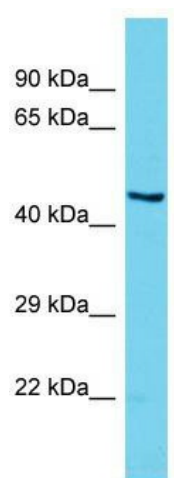
Product data:

Product Type:	Primary Antibodies
Applications:	WB
Recommended Dilution:	WB
Reactivity:	Human
Host:	Rabbit
Isotype:	IgG
Clonality:	Polyclonal
Immunogen:	The immunogen for Anti-CXorf36 Antibody is: synthetic peptide directed towards the N-terminal region of Human CXorf36. Synthetic peptide located within the following region: GLDKCNACIGTSICKKFFKEEIRSDNWLASHLGLPPDSSLSPANYSDDDS
Formulation:	Liquid. Purified antibody supplied in 1x PBS buffer with 0.09% (w/v) sodium azide and 2% sucrose. <i>Note that this product is shipped as lyophilized powder to China customers.</i>
Conjugation:	Unconjugated
Storage:	Store at -20°C as received.
Stability:	Stable for 12 months from date of receipt.
Predicted Protein Size:	47 kDa
Gene Name:	chromosome X open reading frame 36
Database Link:	NP_789789 Entrez Gene 79742 Human Q9H7Y0
Background:	The function of this protein remains unknown.
Synonyms:	4930578C19Rik; bA435K1.1; DIA1R; EPQL1862; PRO3743
Note:	Immunogen sequence homology: Human: 100%; Pig: 92%; Bovine: 92%; Dog: 86%; Horse: 86%; Mouse: 86%; Rat: 79%; Rabbit: 79%
Protein Families:	Secreted Protein



[View online »](#)

Product images:



Host: Rabbit; Target Name: CXorf36; Sample
Tissue: HeLa Whole cell lysates; Antibody Dilution:
1.0ug/ml