

Product datasheet for **TA331574**

IFNE1 (IFNE) Rabbit Polyclonal Antibody

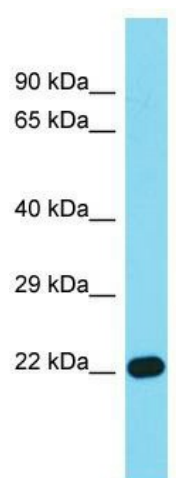
Product data:

Product Type:	Primary Antibodies
Applications:	WB
Recommended Dilution:	WB
Reactivity:	Human
Host:	Rabbit
Isotype:	IgG
Clonality:	Polyclonal
Immunogen:	The immunogen for Anti-IFNE Antibody is: synthetic peptide directed towards the middle region of Human IFNE. Synthetic peptide located within the following region: IFSLFRANISLDGWEENHTEKFLIQLHQLEYLEALMGLEAEKLSGTLGS
Formulation:	Liquid. Purified antibody supplied in 1x PBS buffer with 0.09% (w/v) sodium azide and 2% sucrose. <i>Note that this product is shipped as lyophilized powder to China customers.</i>
Conjugation:	Unconjugated
Storage:	Store at -20°C as received.
Stability:	Stable for 12 months from date of receipt.
Predicted Protein Size:	23 kDa
Gene Name:	interferon, epsilon
Database Link:	NP_795372 Entrez Gene 338376 Human Q86WN2
Background:	The function of this protein remains unknown.
Synonyms:	IFN-E; IFNE1; IFNT1; INFE1; PRO655
Note:	Immunogen sequence homology: Human: 100%; Bovine: 93%; Pig: 79%
Protein Families:	Druggable Genome, Transmembrane
Protein Pathways:	Cytokine-cytokine receptor interaction, Jak-STAT signaling pathway, RIG-I-like receptor signaling pathway



[View online »](#)

Product images:



Host: Rabbit; Target Name: IFNE; Sample Tissue: Fetal Heart lysates; Antibody Dilution: 1.0ug/ml