

Product datasheet for TA331571

Cadherin like 26 (CDH26) Rabbit Polyclonal Antibody

Product data:

| | |
|-------------------------|--|
| Product Type: | Primary Antibodies |
| Applications: | WB |
| Recommended Dilution: | WB |
| Reactivity: | Human |
| Host: | Rabbit |
| Isotype: | IgG |
| Clonality: | Polyclonal |
| Immunogen: | The immunogen for Anti-CDH26 Antibody is: synthetic peptide directed towards the middle region of Human CDH26. Synthetic peptide located within the following region: VQVTDANDPPAFHPQSFIVNKEEGARPGTLLGTFNAMDPDSQIRYELVHD |
| Formulation: | Liquid. Purified antibody supplied in 1x PBS buffer with 0.09% (w/v) sodium azide and 2% sucrose. |
| Conjugation: | Unconjugated |
| Storage: | Store at -20°C as received. |
| Stability: | Stable for 12 months from date of receipt. |
| Predicted Protein Size: | 92 kDa |
| Gene Name: | cadherin 26 |
| Database Link: | NP_817089 Entrez Gene 60437 Human Q8IXH8 |
| Background: | Cadherins are a family of adhesion molecules that mediate Ca ²⁺ -dependent cell-cell adhesion in all solid tissues and modulate a wide variety of processes, including cell polarization and migration. Cadherin domains occur as repeats in the extracellular region and are thought to contribute to the sorting of heterogeneous cell types and the maintenance of orderly structures such as epithelium. This gene encodes a cadherin domain-containing protein whose specific function has not yet been determined. Alternative splicing occurs at this locus and two transcript variants, encoding distinct proteins, have been identified. |
| Synonyms: | VR20 |

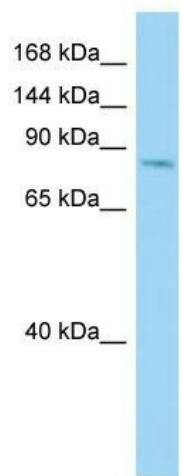


[View online »](#)

Note: Immunogen sequence homology: Human: 100%

Protein Families: Transmembrane

Product images:



Host: Rabbit; Target Name: CDH26; Sample Tissue: COLO205 Whole Cell lysates; Antibody Dilution: 1.0ug/ml