

Product datasheet for **TA331570**

GIYD2 (SLX1B) Rabbit Polyclonal Antibody

Product data:

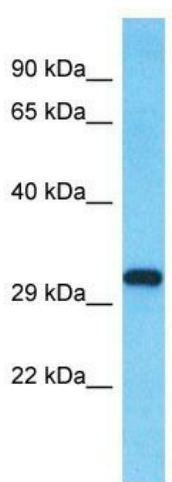
Product Type:	Primary Antibodies
Applications:	WB
Recommended Dilution:	WB
Reactivity:	Human
Host:	Rabbit
Isotype:	IgG
Clonality:	Polyclonal
Immunogen:	The immunogen for Anti-SLX1B Antibody is: synthetic peptide directed towards the N-terminal region of Human SLX1B. Synthetic peptide located within the following region: FFGVYLLYCLNPRYRGRVYVGFTVNTARRVQQHNGGRKKGGAWRTSGRGP
Formulation:	Liquid. Purified antibody supplied in 1x PBS buffer with 0.09% (w/v) sodium azide and 2% sucrose.
Conjugation:	Unconjugated
Storage:	Store at -20°C as received.
Stability:	Stable for 12 months from date of receipt.
Predicted Protein Size:	30 kDa
Gene Name:	SLX1 homolog B, structure-specific endonuclease subunit
Database Link:	NP_835145 Entrez Gene 79008 Human Q9BQ83
Background:	This gene encodes a protein that is an important regulator of genome stability. The protein represents the catalytic subunit of the SLX1-SLX4 structure-specific endonuclease, which can resolve DNA secondary structures that are formed during repair and recombination processes. Two identical copies of this gene are located on the p arm of chromosome 16 due to a segmental duplication; this record represents the more telomeric copy. Alternative splicing results in multiple transcript variants. Read-through transcription also occurs between this gene and the downstream SULT1A4 (sulfotransferase family, cytosolic, 1A, phenol-preferring, member 4) gene.


[View online »](#)

Synonyms: GIYD2

Note: Immunogen sequence homology: Dog: 100%; Pig: 100%; Rat: 100%; Horse: 100%; Human: 100%; Bovine: 100%; Guinea pig: 100%; Mouse: 86%; Rabbit: 86%

Product images:



Host: Rabbit
Target Name: SLX1B
Sample Tissue: Fetal Brain Lysate
Antibody Dilution: 1.0µg/ml

Host: Rabbit; Target Name: SLX1B; Sample Tissue: Fetal Brain lysates; Antibody Dilution: 1.0ug/ml