

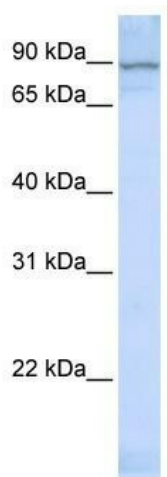
Product datasheet for **TA331566**

ZNF598 Rabbit Polyclonal Antibody

Product data:

Product Type:	Primary Antibodies
Applications:	WB
Recommended Dilution:	WB
Reactivity:	Human
Host:	Rabbit
Isotype:	IgG
Clonality:	Polyclonal
Immunogen:	The immunogen for Anti-ZNF598 Antibody: synthetic peptide directed towards the middle region of human ZNF598. Synthetic peptide located within the following region: EGP GPKETSTNGPVSQEAFSVTGPAAPGCVGVPGALPPPSPKLKDEDFPS
Formulation:	Liquid. Purified antibody supplied in 1x PBS buffer with 0.09% (w/v) sodium azide and 2% sucrose.
Conjugation:	Unconjugated
Storage:	Store at -20°C as received.
Stability:	Stable for 12 months from date of receipt.
Predicted Protein Size:	99 kDa
Gene Name:	zinc finger protein 598
Database Link:	NP_835461 Entrez Gene 90850 Human Q86UK7
Background:	ZNF598 contains 1 C2H2-type zinc finger and 1 RING-type zinc finger. The exact function of ZNF598 remains unknown.
Synonyms:	DKFZp762F135; FLJ00086
Note:	Immunogen sequence homology: Rat: 100%; Human: 100%; Pig: 93%; Bovine: 93%; Mouse: 85%; Horse: 77%
Protein Families:	Druggable Genome


[View online »](#)

Product images:

WB Suggested Anti-ZNF598 Antibody Titration:
0.2-1 ug/ml; ELISA Titer: 1: 312500; Positive
Control: MCF7 cell lysate