

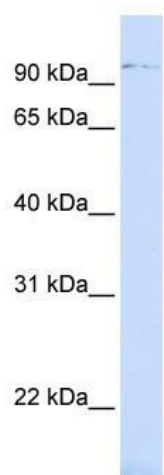
## Product datasheet for **TA331565**

### ZNF598 Rabbit Polyclonal Antibody

#### Product data:

|                         |   |
|-------------------------|---|
| Product Type:           | Primary Antibodies  |
| Applications:           | WB  |
| Recommended Dilution:   | WB  |
| Reactivity:             | Human   |
| Host:                   | Rabbit  |
| Isotype:                | IgG   |
| Clonality:              | Polyclonal  |
| Immunogen:              | The immunogen for Anti-ZNF598 Antibody: synthetic peptide directed towards the middle region of human ZNF598. Synthetic peptide located within the following region:<br>GLASIQPSKVGGKKKVGSEKPGTTLPPATCPPGALQAPEAPASRAEG |
| Formulation:            | Liquid. Purified antibody supplied in 1x PBS buffer with 0.09% (w/v) sodium azide and 2% sucrose.   |
| Conjugation:            | Unconjugated  |
| Storage:                | Store at -20°C as received.   |
| Stability:              | Stable for 12 months from date of receipt.  |
| Predicted Protein Size: | 99 kDa  |
| Gene Name:              | zinc finger protein 598   |
| Database Link:          | <a href="#">NP_835461</a><br><a href="#">Entrez Gene 90850 Human</a><br><a href="#">Q86UK7</a>  |
| Background:             | ZNF598 contains 1 C2H2-type zinc finger and 1 RING-type zinc finger. The exact function of ZNF598 remains unknown.  |
| Synonyms:               | DKFZp762F135; FLJ00086  |
| Note:                   | Immunogen sequence homology: Pig: 100%; Rat: 100%; Human: 100%; Guinea pig: 100%; Dog: 92%; Horse: 92%; Mouse: 92%  |
| Protein Families:       | Druggable Genome  |


[View online »](#)

**Product images:**


WB Suggested Anti-ZNF598 Antibody Titration:  
 0.2-1 ug/ml; ELISA Titer: 1: 62500; Positive  
 Control: 721\_B cell lysate