

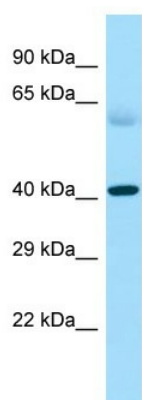
Product datasheet for TA331564

MPRA Rabbit Antibody

Product data:

Product Type:	Primary Antibodies
Reactivity:	Human
Host:	Rabbit
Isotype:	IgG
Immunogen:	The immunogen for Anti-PAQR7 Antibody is: synthetic peptide directed towards the C-terminal region of Human PAQR7. Synthetic peptide located within the following region: YEARRPIYEPLHTHWPHNFSGLFLLTVGSSILTAFLSQLVQRKLDQKTK
Formulation:	Shipped as lyophilized powder. Purified antibody supplied in 1x PBS buffer with 0.09% (w/v) sodium azide and 2% sucrose.
Conjugation:	Unconjugated
Storage:	Store at -20°C as received.
Stability:	Stable for 12 months from date of receipt.
Predicted Protein Size:	38 kDa
Database Link:	NP_848509 Entrez Gene 164091 Human
Background:	PAQR7 is a steroid membrane receptor. It binds progesterone in vitro and may be involved in oocyte maturation.
Synonyms:	MPRA; mSR; PGLP
Note:	Immunogen sequence homology: Human: 100%; Rat: 86%; Mouse: 86%; Horse: 85%; Pig: 79%; Guinea pig: 79%
Protein Families:	Druggable Genome, Transmembrane


[View online »](#)

Product images:

Host: Rabbit
Target Name: PAQR7
Sample Type: Fetal Heart lysates
Antibody Dilution: 1.0ug/ml