

Product datasheet for **TA331563**

C9orf140 (SAPCD2) Rabbit Polyclonal Antibody

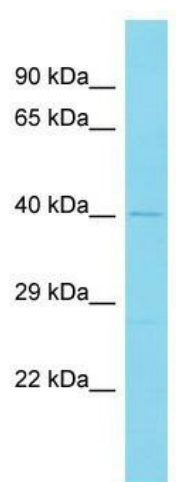
Product data:

Product Type:	Primary Antibodies
Applications:	WB
Recommended Dilution:	WB
Reactivity:	Human
Host:	Rabbit
Isotype:	IgG
Clonality:	Polyclonal
Immunogen:	The immunogen for Anti-SAPCD2 Antibody is: synthetic peptide directed towards the middle region of Human SAPCD2. Synthetic peptide located within the following region: AARSPEQLCAPAEAAPCPAEPERSQSAALPSSSADAGAVACRALEADSG
Formulation:	Liquid. Purified antibody supplied in 1x PBS buffer with 0.09% (w/v) sodium azide and 2% sucrose.
Conjugation:	Unconjugated
Storage:	Store at -20°C as received.
Stability:	Stable for 12 months from date of receipt.
Predicted Protein Size:	43 kDa
Gene Name:	suppressor APC domain containing 2
Database Link:	NP_848543 Entrez Gene 89958 Human Q86UD0
Background:	The function of this protein remains unknown.
Synonyms:	C9orf140; p42.3
Note:	Immunogen sequence homology: Human: 100%; Rabbit: 86%; Dog: 85%; Pig: 79%; Guinea pig: 79%



[View online »](#)

Product images:



Host: Rabbit; Target Name: SAPCD2; Sample
Tissue: Fetal Lung lysates; Antibody Dilution:
1.0ug/ml