

Product datasheet for **TA331561**

DTX3 Rabbit Polyclonal Antibody

Product data:

Product Type:	Primary Antibodies
Applications:	WB
Recommended Dilution:	WB
Reactivity:	Mouse
Host:	Rabbit
Isotype:	IgG
Clonality:	Polyclonal
Immunogen:	The immunogen for Anti-Dtx3 Antibody: synthetic peptide corresponding to a region of Mouse. Synthetic peptide located within the following region: YEKYGTVIQYVFPPGVQGAEHPNPGVRYPGTTRVAYLPDCPEGNKVLTL
Formulation:	Liquid. Purified antibody supplied in 1x PBS buffer with 0.09% (w/v) sodium azide and 2% sucrose. <i>Note that this product is shipped as lyophilized powder to China customers.</i>
Conjugation:	Unconjugated
Storage:	Store at -20°C as received.
Stability:	Stable for 12 months from date of receipt.
Predicted Protein Size:	38 kDa
Gene Name:	deltex 3, E3 ubiquitin ligase
Database Link:	NP_848597 Entrez Gene 80904 Mouse Q8N9I9
Background:	Dtx3 is a regulator of Notch signaling, a signaling pathway involved in cell-cell communications that regulates a broad spectrum of cell-fate determinations. Dtx3 probably acts both as a positive and negative regulator of Notch, depending on the developmental and cell context. Dtx3 functions as an ubiquitin ligase protein in vitro, suggesting that it may regulate the Notch pathway via some ubiquitin ligase activity.
Synonyms:	deltex3; RNF154



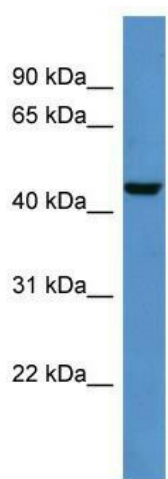
[View online »](#)

Note: Immunogen sequence homology: Dog: 100%; Pig: 100%; Rat: 100%; Horse: 100%; Human: 100%; Mouse: 100%; Bovine: 100%; Rabbit: 100%; Zebrafish: 93%; Guinea pig: 79%

Protein Families: Druggable Genome

Protein Pathways: Notch signaling pathway

Product images:



WB Suggested Anti-Dtx3 Antibody Titration: 0.2-1 ug/ml; ELISA Titer: 1: 62500; Positive Control: Mouse Brain