

## Product datasheet for **TA331560**

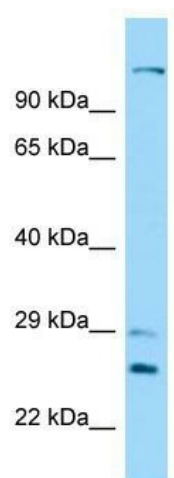
### DNAH12 Rabbit Polyclonal Antibody

#### Product data:

Product Type:	Primary Antibodies
Applications:	WB
Recommended Dilution:	WB
Reactivity:	Human
Host:	Rabbit
Isotype:	IgG
Clonality:	Polyclonal
Immunogen:	The immunogen for Anti-DNAH12 Antibody is: synthetic peptide directed towards the N-terminal region of Human DNAH12. Synthetic peptide located within the following region: KKGFNYIMKQCVESPLVPIQQEWLDHMLRLIPESLKEGKEREEELLES
Formulation:	Liquid. Purified antibody supplied in 1x PBS buffer with 0.09% (w/v) sodium azide and 2% sucrose.
Conjugation:	Unconjugated
Storage:	Store at -20°C as received.
Stability:	Stable for 12 months from date of receipt.
Predicted Protein Size:	120 kDa
Gene Name:	dynein axonemal heavy chain 12
Database Link:	<a href="#">NP_848599</a> <a href="#">Entrez Gene 201625 Human</a> <a href="#">Q6ZR08</a>
Background:	DNAH12 is a force generating protein of respiratory cilia. It produces force towards the minus ends of microtubules. Dynein has ATPase activity; the force-producing power stroke is thought to occur on release of ADP. DNAH12 is involved in sperm motility; implicated in sperm flagellar assembly
Synonyms:	DHC3; DLP12; DNAH7L; DNAH12L; DNAHC3; DNAHC12; DNHD2; HDHC3; HL-19; HL19
Note:	Immunogen sequence homology: Dog: 100%; Human: 100%; Horse: 93%; Rabbit: 93%; Rat: 86%


[View online »](#)

## Product images:



Host: Rabbit; Target Name: DNAH12; Sample  
Tissue: 721\_B Whole Cell lysates; Antibody  
Dilution: 1.0ug/ml