

## Product datasheet for **TA331559**

### TRIML1 Rabbit Polyclonal Antibody

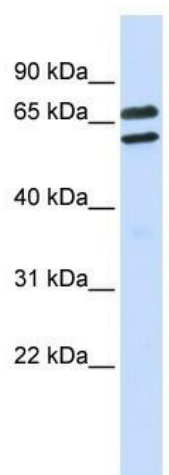
#### Product data:

Product Type:	Primary Antibodies
Applications:	WB
Recommended Dilution:	WB
Reactivity:	Human
Host:	Rabbit
Isotype:	IgG
Clonality:	Polyclonal
Immunogen:	The immunogen for Anti-TRIML1 Antibody: synthetic peptide directed towards the middle region of human TRIML1. Synthetic peptide located within the following region: DSVSRKGNLPPGDLFSLIGLKIGDDYSLWVSSPLKGQHVREPVCKVGV
Formulation:	Liquid. Purified antibody supplied in 1x PBS buffer with 0.09% (w/v) sodium azide and 2% sucrose.
Conjugation:	Unconjugated
Storage:	Store at -20°C as received.
Stability:	Stable for 12 months from date of receipt.
Predicted Protein Size:	53 kDa
Gene Name:	tripartite motif family like 1
Database Link:	<a href="#">NP_848651</a> <a href="#">Entrez Gene 339976 Human Q8N9V2</a>
Background:	TRIML1 contains 1 B30.2/SPRY domain and 1 RING-type zinc finger. The function of the TRIML1 protein remains unknown.
Synonyms:	RNF209
Note:	Immunogen sequence homology: Dog: 100%; Pig: 100%; Rat: 100%; Human: 100%; Mouse: 100%; Bovine: 100%; Rabbit: 100%; Guinea pig: 100%; Horse: 93%
Protein Families:	Druggable Genome



[View online »](#)

## Product images:



WB Suggested Anti-TRIML1 Antibody Titration:  
0.2-1 ug/ml; ELISA Titer: 1: 312500; Positive  
Control: Human Placenta