

## Product datasheet for **TA331558**

### RTN4RL1 Rabbit Polyclonal Antibody

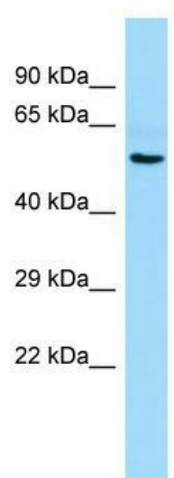
#### Product data:

Product Type:	Primary Antibodies
Applications:	WB
Recommended Dilution:	WB
Reactivity:	Human
Host:	Rabbit
Isotype:	IgG
Clonality:	Polyclonal
Immunogen:	The immunogen for Anti-RTN4RL1 Antibody is: synthetic peptide directed towards the middle region of Human RTN4RL1. Synthetic peptide located within the following region: SPHGPTRSKGHPHGPRPGHRKPGKNCTNPRNRNQISKAGAGKQAPLPDY
Formulation:	Liquid. Purified antibody supplied in 1x PBS buffer with 0.09% (w/v) sodium azide and 2% sucrose. <i>Note that this product is shipped as lyophilized powder to China customers.</i>
Conjugation:	Unconjugated
Storage:	Store at -20°C as received.
Stability:	Stable for 12 months from date of receipt.
Predicted Protein Size:	49 kDa
Gene Name:	reticulon 4 receptor like 1
Database Link:	<a href="#">NP_848663</a> <a href="#">Entrez Gene 146760 Human</a> <a href="#">Q86UN2</a>
Background:	RTN4RL1 may play a role in regulating axonal regeneration and plasticity in the adult central nervous system.
Synonyms:	NgR3; NGRH2
Note:	Immunogen sequence homology: Human: 100%; Pig: 85%; Bovine: 83%; Rabbit: 83%; Horse: 77%
Protein Families:	Druggable Genome



[View online »](#)

## Product images:



Host: Rabbit; Target Name: RTN4RL1; Sample  
Tissue: Placenta lysates; Antibody Dilution:  
1.0ug/ml