

Product datasheet for TA331557

RTN4RL1 Rabbit Polyclonal Antibody

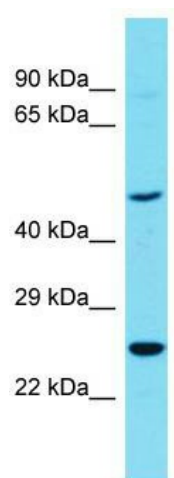
Product data:

Product Type:	Primary Antibodies
Applications:	WB
Recommended Dilution:	WB
Reactivity:	Human
Host:	Rabbit
Isotype:	IgG
Clonality:	Polyclonal
Immunogen:	The immunogen for Anti-RTN4RL1 Antibody is: synthetic peptide directed towards the C-terminal region of Human RTN4RL1. Synthetic peptide located within the following region: RPGHRKPGKNCTNPRNRNQISKAGAGKQAPELPDYAPDYQHKFSFDIMPT
Formulation:	Liquid. Purified antibody supplied in 1x PBS buffer with 0.09% (w/v) sodium azide and 2% sucrose.
Conjugation:	Unconjugated
Storage:	Store at -20°C as received.
Stability:	Stable for 12 months from date of receipt.
Predicted Protein Size:	49 kDa
Gene Name:	reticulon 4 receptor like 1
Database Link:	NP_848663 Entrez Gene 146760 Human Q86UN2
Background:	RTN4RL1 may play a role in regulating axonal regeneration and plasticity in the adult central nervous system.
Synonyms:	NgR3; NGRH2
Note:	Immunogen sequence homology: Human: 100%; Bovine: 86%; Dog: 79%; Pig: 79%; Horse: 79%
Protein Families:	Druggable Genome



[View online »](#)

Product images:



Host: Rabbit; Target Name: RTN4RL1; Sample Tissue: OVCAR-3 Whole Cell lysates; Antibody Dilution: 1.0ug/ml