

Product datasheet for **TA331556**

Yod1 Rabbit Polyclonal Antibody

Product data:

Product Type:	Primary Antibodies
Applications:	WB
Recommended Dilution:	WB
Reactivity:	Mouse
Host:	Rabbit
Isotype:	IgG
Clonality:	Polyclonal
Immunogen:	The immunogen for Anti-Yod1 Antibody is: synthetic peptide directed towards the N-terminal region of MOUSE Yod1. Synthetic peptide located within the following region: VPQSEAGTKAGPAGGRPADTMWRVRCKAKGGTHLLQGLSSRTLRELQGQ
Formulation:	Liquid. Purified antibody supplied in 1x PBS buffer with 0.09% (w/v) sodium azide and 2% sucrose. <i>Note that this product is shipped as lyophilized powder to China customers.</i>
Purification:	Affinity Purified
Conjugation:	Unconjugated
Storage:	Store at -20°C as received.
Stability:	Stable for 12 months from date of receipt.
Predicted Protein Size:	37 kDa
Gene Name:	YOD1 OTU deubiquitinating enzyme 1 homologue (S. cerevisiae)
Database Link:	NP_848806 Entrez Gene 226418 Mouse Q8CB27



[View online »](#)

Background:

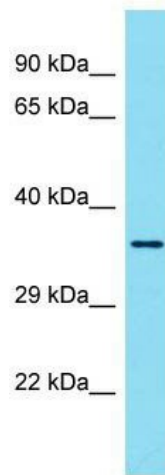
Hydrolase that can remove conjugated ubiquitin from proteins and participates in endoplasmic reticulum-associated degradation (ERAD) for misfolded luminal proteins. Yod1 may act by trimming the ubiquitin chain on the associated substrate to facilitate their threading through the VCP/p97 pore. Ubiquitin moieties on substrates may present a steric impediment to the threading process when the substrate is transferred to the VCP pore and threaded through VCP's axial channel. Yod1 mediates deubiquitination of both 'Lys-48'- and 'Lys-63'-linked polyubiquitin chains. It is able to cleave both polyubiquitin and di-ubiquitin.

Synonyms:

DKFZp451J1719; DUBA-8; DUBA8; HIN-7; HIN7; HsHIN7; OTUD2; PRO0907

Note:

Immunogen sequence homology: Dog: 100%; Pig: 100%; Rat: 100%; Horse: 100%; Human: 100%; Rabbit: 100%; Guinea pig: 100%; Bovine: 93%; Mouse: 85%; Zebrafish: 79%

Product images:

Host: Rabbit; Target Name: Yod1; Sample Tissue: Mouse Spleen lysates; Antibody Dilution: 1.0ug/ml