

Product datasheet for **TA331555**

CCDC39 Rabbit Antibody

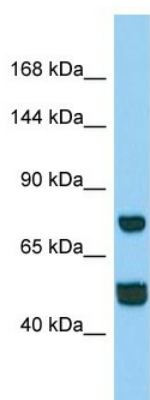
Product data:

Product Type:	Primary Antibodies
Reactivity:	Human
Host:	Rabbit
Isotype:	IgG
Immunogen:	The immunogen for Anti-CCDC39 Antibody is: synthetic peptide directed towards the N-terminal region of Human CCDC39. Synthetic peptide located within the following region: QELSITQSLCKARERETEESEEHFKAIAQRELGRVKDEIQRLENEMASILE
Formulation:	Shipped as lyophilized powder. Purified antibody supplied in 1x PBS buffer with 0.09% (w/v) sodium azide and 2% sucrose. <i>Note that this product is shipped as lyophilized powder to China customers.</i>
Purification:	Affinity Purified
Conjugation:	Unconjugated
Storage:	Store at -20°C as received.
Stability:	Stable for 12 months from date of receipt.
Predicted Protein Size:	73 kDa
Database Link:	NP_852091 Entrez Gene 339829 Human
Background:	The function of this protein remains unknown.
Synonyms:	CILD14; FAP59
Note:	Immunogen sequence homology: Human: 100%; Dog: 86%; Pig: 86%; Rat: 86%; Mouse: 86%; Rabbit: 86%; Guinea pig: 86%; Bovine: 79%



[View online »](#)

Product images:



Host: Rabbit
Target Name: CCDC39
Sample Type: HeLa Whole cell lysates
Antibody Dilution: 1.0ug/ml