

Product datasheet for **TA331554**

KRT25 Rabbit Polyclonal Antibody

Product data:

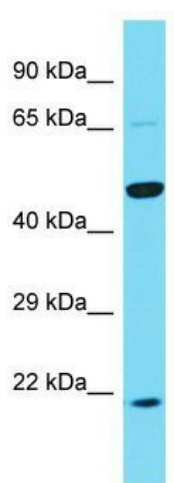
Product Type:	Primary Antibodies
Applications:	WB
Recommended Dilution:	WB
Reactivity:	Human
Host:	Rabbit
Isotype:	IgG
Clonality:	Polyclonal
Immunogen:	The immunogen for Anti-KRT25 Antibody is: synthetic peptide directed towards the C-terminal region of Human KRT25. Synthetic peptide located within the following region: HQVRTETEGQKLEYEQLLDIKLHLEKEIETYCLLIGGDDGACKSGGYKSK
Formulation:	Liquid. Purified antibody supplied in 1x PBS buffer with 0.09% (w/v) sodium azide and 2% sucrose. <i>Note that this product is shipped as lyophilized powder to China customers.</i>
Conjugation:	Unconjugated
Storage:	Store at -20°C as received.
Stability:	Stable for 12 months from date of receipt.
Predicted Protein Size:	49 kDa
Gene Name:	keratin 25
Database Link:	NP_853512 Entrez Gene 147183 Human Q7Z3Z0
Background:	This gene encodes a member of the type I (acidic) keratin family, which belongs to the superfamily of intermediate filament (IF) proteins. Keratins are heteropolymeric structural proteins which form the intermediate filament. These filaments, along with actin microfilaments and microtubules, compose the cytoskeleton of epithelial cells. The type I keratin genes are clustered in a region of chromosome 17q12-q21.
Synonyms:	ARWH3; KRT24IRS1; KRT25A



[View online »](#)

Note: Immunogen sequence homology: Dog: 100%; Pig: 100%; Rat: 100%; Goat: 100%; Horse: 100%; Human: 100%; Mouse: 100%; Sheep: 100%; Bovine: 100%; Rabbit: 100%; Guinea pig: 100%

Product images:



Host: Rabbit; Target Name: KRT25; Sample Tissue: PANC1 Whole Cell lysates; Antibody Dilution: 1.0ug/ml