

Product datasheet for **TA331553**

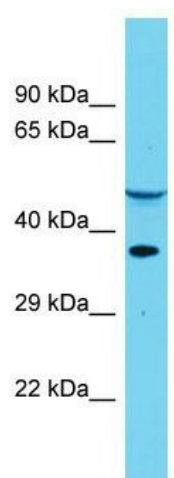
DUS4L Rabbit Polyclonal Antibody

Product data:

Product Type:	Primary Antibodies
Applications:	WB
Recommended Dilution:	WB
Reactivity:	Human
Host:	Rabbit
Isotype:	IgG
Clonality:	Polyclonal
Immunogen:	The immunogen for Anti-DUS4L Antibody is: synthetic peptide directed towards the middle region of Human DUS4L. Synthetic peptide located within the following region: ETPGFSVSIKIRIHDDLKRTVDLCQKAEATGVSWITVHGRTAERHQPVH
Formulation:	Liquid. Purified antibody supplied in 1x PBS buffer with 0.09% (w/v) sodium azide and 2% sucrose. <i>Note that this product is shipped as lyophilized powder to China customers.</i>
Conjugation:	Unconjugated
Storage:	Store at -20°C as received.
Stability:	Stable for 12 months from date of receipt.
Predicted Protein Size:	35 kDa
Gene Name:	dihydrouridine synthase 4 like
Database Link:	NP_853559 Entrez Gene 11062 Human O95620
Background:	DUS4L catalyzes the synthesis of dihydrouridine, a modified base found in the D-loop of most tRNAs.
Synonyms:	DUS4; PP35
Note:	Immunogen sequence homology: Human: 100%; Dog: 93%; Pig: 93%; Rat: 93%; Horse: 93%; Mouse: 93%; Bovine: 93%; Zebrafish: 93%; Guinea pig: 93%; Rabbit: 86%



[View online »](#)

Product images:

Host: Rabbit; Target Name: DUS4L; Sample
Tissue: Placenta lysates; Antibody Dilution:
1.0ug/ml