

## Product datasheet for **TA331552**

### DUS4L Rabbit Polyclonal Antibody

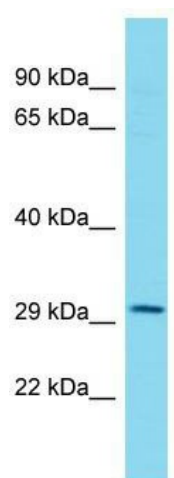
#### Product data:

Product Type:	Primary Antibodies
Applications:	WB
Recommended Dilution:	WB
Reactivity:	Human
Host:	Rabbit
Isotype:	IgG
Clonality:	Polyclonal
Immunogen:	The immunogen for Anti-DUS4L Antibody is: synthetic peptide directed towards the N-terminal region of Human DUS4L. Synthetic peptide located within the following region: SKLAFRTLVRKYSCDLCYTPMIVAADFVKSİKARDSEFTTNQGDCPLIVQ
Formulation:	Liquid. Purified antibody supplied in 1x PBS buffer with 0.09% (w/v) sodium azide and 2% sucrose.
Conjugation:	Unconjugated
Storage:	Store at -20°C as received.
Stability:	Stable for 12 months from date of receipt.
Predicted Protein Size:	35 kDa
Gene Name:	dihydrouridine synthase 4 like
Database Link:	<a href="#">NP_853559</a> <a href="#">Entrez Gene 11062 Human</a> <a href="#">O95620</a>
Background:	DUS4L catalyzes the synthesis of dihydrouridine, a modified base found in the D-loop of most tRNAs.
Synonyms:	DUS4; PP35
Note:	Immunogen sequence homology: Dog: 100%; Pig: 100%; Rat: 100%; Horse: 100%; Human: 100%; Mouse: 100%; Bovine: 100%; Rabbit: 100%; Guinea pig: 100%; Zebrafish: 79%



[View online »](#)

## Product images:



Host: Rabbit; Target Name: DUS4L; Sample  
Tissue: Hela Whole cell lysates; Antibody Dilution:  
1.0ug/ml