

Product datasheet for **TA331551**

KANK4 Rabbit Polyclonal Antibody

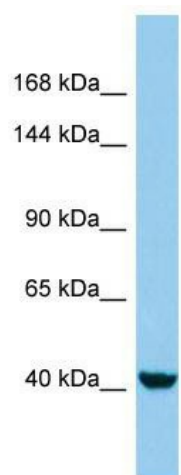
Product data:

Product Type:	Primary Antibodies
Applications:	WB
Recommended Dilution:	WB
Reactivity:	Human
Host:	Rabbit
Isotype:	IgG
Clonality:	Polyclonal
Immunogen:	The immunogen for Anti-KANK4 Antibody is: synthetic peptide directed towards the C-terminal region of Human KANK4. Synthetic peptide located within the following region: RLLLAHPACDSSLTDKAGRTALSIALKSPHMEIAGLLRAHAEQGRSLGL
Formulation:	Liquid. Purified antibody supplied in 1x PBS buffer with 0.09% (w/v) sodium azide and 2% sucrose. <i>Note that this product is shipped as lyophilized powder to China customers.</i>
Purification:	Affinity Purified
Conjugation:	Unconjugated
Storage:	Store at -20°C as received.
Stability:	Stable for 12 months from date of receipt.
Predicted Protein Size:	40 kDa
Gene Name:	KN motif and ankyrin repeat domains 4
Database Link:	NP_859063 Entrez Gene 163782 Human Q5T7N3
Background:	KANK4 may be involved in the control of cytoskeleton formation by regulating actin polymerization.
Synonyms:	ANKRD38; dj1078M7.1
Note:	Immunogen sequence homology: Dog: 100%; Pig: 100%; Human: 100%; Horse: 93%; Mouse: 93%; Bovine: 93%; Rabbit: 93%; Rat: 79%



[View online »](#)

Product images:



Host: Rabbit; Target Name: KANK4; Sample
Tissue: HepG2 Whole Cell lysates; Antibody
Dilution: 1.0ug/ml