

Product datasheet for **TA331550**

GPR141 Rabbit Polyclonal Antibody

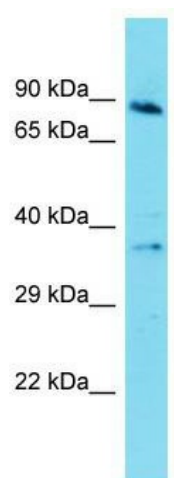
Product data:

Product Type:	Primary Antibodies
Applications:	WB
Recommended Dilution:	WB
Reactivity:	Human
Host:	Rabbit
Isotype:	IgG
Clonality:	Polyclonal
Immunogen:	The immunogen for Anti-GPR141 Antibody is: synthetic peptide directed towards the middle region of Human GPR141. Synthetic peptide located within the following region: DKVEFYRKLHAVAASAGMWTLVIVIVPLVVSRYGIHEEYNEEHCFKFKH
Formulation:	Liquid. Purified antibody supplied in 1x PBS buffer with 0.09% (w/v) sodium azide and 2% sucrose. <i>Note that this product is shipped as lyophilized powder to China customers.</i>
Conjugation:	Unconjugated
Storage:	Store at -20°C as received.
Stability:	Stable for 12 months from date of receipt.
Predicted Protein Size:	35 kDa
Gene Name:	G protein-coupled receptor 141
Database Link:	NP_861456 Entrez Gene 353345 Human Q7Z602
Background:	GPR141 is a member of the rhodopsin family of G protein-coupled receptors (GPRs).
Synonyms:	PGR13
Note:	Immunogen sequence homology: Human: 100%; Rabbit: 89%
Protein Families:	Druggable Genome, Transmembrane



[View online »](#)

Product images:



Host: Rabbit; Target Name: GPR141; Sample
Tissue: 721_B Whole Cell lysates; Antibody
Dilution: 1.0ug/ml