

Product datasheet for **TA331549**

UBE2C Rabbit Polyclonal Antibody

Product data:

Product Type:	Primary Antibodies
Applications:	WB
Recommended Dilution:	WB
Reactivity:	Human
Host:	Rabbit
Isotype:	IgG
Clonality:	Polyclonal
Immunogen:	The immunogen for Anti-UBE2C Antibody: synthetic peptide directed towards the middle region of human UBE2C. Synthetic peptide located within the following region: GTAVGSIRTSSVCLLSGPRETQDSSKPLVWGLGWDMRLLLELTLQLFLQ
Formulation:	Liquid. Purified antibody supplied in 1x PBS buffer with 0.09% (w/v) sodium azide and 2% sucrose. <i>Note that this product is shipped as lyophilized powder to China customers.</i>
Conjugation:	Unconjugated
Storage:	Store at -20°C as received.
Stability:	Stable for 12 months from date of receipt.
Predicted Protein Size:	17 kDa
Gene Name:	ubiquitin conjugating enzyme E2 C
Database Link:	NP_861515 Entrez Gene 11065 Human O00762
Background:	The modification of proteins with ubiquitin is an important cellular mechanism for targeting abnormal or short-lived proteins for degradation. Ubiquitination involves at least three classes of enzymes: ubiquitin-activating enzymes, or E1s, ubiquitin-conjugating enzymes, or E2s, and ubiquitin-protein ligases, or E3s. UBE2C is a member of the E2 ubiquitin-conjugating enzyme family. This enzyme is required for the destruction of mitotic cyclins and for cell cycle progression.
Synonyms:	dj447F3.2; UBCH10



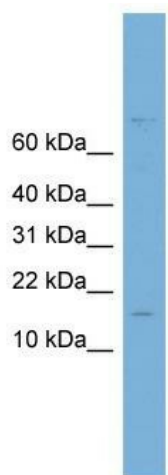
[View online »](#)

Note: Immunogen sequence homology: Human: 100%

Protein Families: Druggable Genome

Protein Pathways: Ubiquitin mediated proteolysis

Product images:



WB Suggested Anti-UBE2C Antibody Titration: 0.2-1 ug/ml; ELISA Titer: 1: 12500; Positive Control: THP-1 cell lysate