

Product datasheet for **TA331548**

Keratin 80 (KRT80) Rabbit Polyclonal Antibody

Product data:

Product Type:	Primary Antibodies
Applications:	WB
Recommended Dilution:	WB
Reactivity:	Human
Host:	Rabbit
Isotype:	IgG
Clonality:	Polyclonal
Immunogen:	The immunogen for Anti-KRT80 Antibody is: synthetic peptide directed towards the C-terminal region of Human KRT80. Synthetic peptide located within the following region: VVSAVQSRCKTAASRSGLSKAPSRKKKGSKGPVIKITEMSEKYFSQESEV
Formulation:	Liquid. Purified antibody supplied in 1x PBS buffer with 0.09% (w/v) sodium azide and 2% sucrose. <i>Note that this product is shipped as lyophilized powder to China customers.</i>
Conjugation:	Unconjugated
Storage:	Store at -20°C as received.
Stability:	Stable for 12 months from date of receipt.
Predicted Protein Size:	49 kDa
Gene Name:	keratin 80
Database Link:	NP_872313 Entrez Gene 144501 Human Q6KB66
Background:	Keratins are intermediate filament proteins responsible for the structural integrity of epithelial cells and are subdivided into epithelial keratins and hair keratins. This gene's expression profile shows that it encodes a type II epithelial keratin, although structurally the encoded protein is more like a type II hair keratin. This protein is involved in cell differentiation, localizing near desmosomal plaques in earlier stages of differentiation but then dispersing throughout the cytoplasm in terminally differentiating cells. The type II keratins are clustered in a region of chromosome 12q13. Two transcript variants encoding two different fully functional isoforms have been found for this gene.

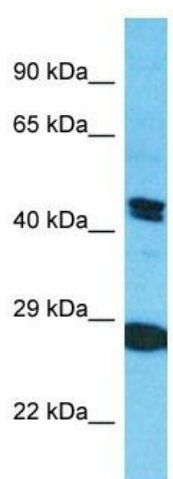


[View online »](#)

Synonyms: KB20

Note: Immunogen sequence homology: Human: 100%

Product images:



Host: Rabbit

Target Name: KRT80

Sample Tissue: Jurkat Cell Lysate

Antibody Dilution: 1.0µg/ml

Host: Rabbit; Target Name: KRT80; Sample Tissue: Jurkat Whole Cell lysates; Antibody Dilution: 1.0ug/ml