

Product datasheet for **TA331547**

Calcium binding protein 7 (CABP7) Rabbit Polyclonal Antibody

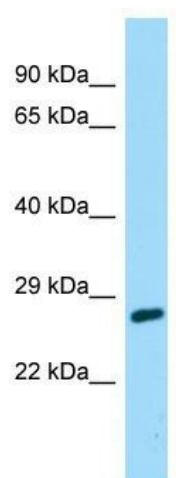
Product data:

Product Type:	Primary Antibodies
Applications:	WB
Recommended Dilution:	WB
Reactivity:	Human
Host:	Rabbit
Isotype:	IgG
Clonality:	Polyclonal
Immunogen:	The immunogen for Anti-CABP7 Antibody is: synthetic peptide directed towards the C-terminal region of Human CABP7. Synthetic peptide located within the following region: LYDTFCEHLSMKDIENIIMTEEESH LGTAE ECPVDVETCSNQQIRQTCVR
Formulation:	Liquid. Purified antibody supplied in 1x PBS buffer with 0.09% (w/v) sodium azide and 2% sucrose. <i>Note that this product is shipped as lyophilized powder to China customers.</i>
Conjugation:	Unconjugated
Storage:	Store at -20°C as received.
Stability:	Stable for 12 months from date of receipt.
Predicted Protein Size:	24 kDa
Gene Name:	calcium binding protein 7
Database Link:	NP_872333 Entrez Gene 164633 Human Q86V35
Background:	CABP7 negatively regulates Golgi-to-plasma membrane trafficking by interacting with PI4KB and inhibiting its activity.
Synonyms:	CALN2
Note:	Immunogen sequence homology: Dog: 100%; Pig: 100%; Rat: 100%; Horse: 100%; Human: 100%; Mouse: 100%; Bovine: 100%; Rabbit: 100%; Guinea pig: 100%
Protein Families:	Transmembrane



[View online »](#)

Product images:



Host: Rabbit; Target Name: CABP7; Sample
Tissue: 721_B Whole Cell lysates; Antibody
Dilution: 1.0ug/ml