

Product datasheet for **TA331546**

C1QL2 Rabbit Polyclonal Antibody

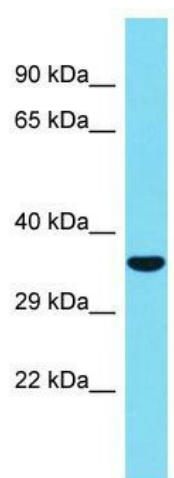
Product data:

Product Type:	Primary Antibodies
Applications:	WB
Recommended Dilution:	WB
Reactivity:	Human
Host:	Rabbit
Isotype:	IgG
Clonality:	Polyclonal
Immunogen:	The immunogen for Anti-C1QL2 Antibody is: synthetic peptide directed towards the middle region of Human C1QL2. Synthetic peptide located within the following region: GTASGVGVVGGGAGVGGDSEGEVTSALSATFSGPKIAFYVGLKSPHEGYE
Formulation:	Liquid. Purified antibody supplied in 1x PBS buffer with 0.09% (w/v) sodium azide and 2% sucrose. <i>Note that this product is shipped as lyophilized powder to China customers.</i>
Conjugation:	Unconjugated
Storage:	Store at -20°C as received.
Stability:	Stable for 12 months from date of receipt.
Predicted Protein Size:	32 kDa
Gene Name:	complement component 1, q subcomponent-like 2
Database Link:	NP_872334 Entrez Gene 165257 Human Q7Z5L3
Background:	C1QL2 may regulate the number of excitatory synapses that are formed on hippocampus neurons. It has no effect on inhibitory synapses.
Synonyms:	C1QTNF10; CTRP10
Note:	Immunogen sequence homology: Human: 100%; Rat: 92%; Dog: 86%; Pig: 85%; Mouse: 85%; Bovine: 85%
Protein Families:	Secreted Protein



[View online »](#)

Product images:



Host: Rabbit; Target Name: C1QL2; Sample
Tissue: Fetal Heart lysates; Antibody Dilution:
1.0ug/ml