

## Product datasheet for **TA331544**

### Protein cornichon homolog 2 (CNIH2) Rabbit Polyclonal Antibody

#### Product data:

Product Type:	Primary Antibodies
Applications:	WB
Recommended Dilution:	WB
Reactivity:	Human
Host:	Rabbit
Isotype:	IgG
Clonality:	Polyclonal
Immunogen:	The immunogen for Anti-CNIH2 Antibody is: synthetic peptide directed towards the N-terminal region of Human CNIH2. Synthetic peptide located within the following region: AFCYMLTLVLCASLIFFVIWHIIAFDELRTDFKNPIDQGNPARARERLKN
Formulation:	Liquid. Purified antibody supplied in 1x PBS buffer with 0.09% (w/v) sodium azide and 2% sucrose. <i>Note that this product is shipped as lyophilized powder to China customers.</i>
Conjugation:	Unconjugated
Storage:	Store at -20°C as received.
Stability:	Stable for 12 months from date of receipt.
Predicted Protein Size:	19 kDa
Gene Name:	cornichon family AMPA receptor auxiliary protein 2
Database Link:	<a href="#">NP_872359</a> <a href="#">Entrez Gene 254263 Human</a> <a href="#">Q6PI25</a>
Background:	The protein encoded by this gene is an auxiliary subunit of the ionotropic glutamate receptor of the AMPA subtype. AMPA receptors mediate fast synaptic neurotransmission in the central nervous system. This protein has been reported to interact with the Type I AMPA receptor regulatory protein isoform gamma-8 to control assembly of hippocampal AMPA receptor complexes, thereby modulating receptor gating and pharmacology. Alternative splicing results in multiple transcript variants.
Synonyms:	CNIH-2; Cnil

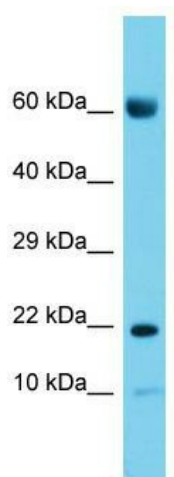


[View online »](#)

**Note:** Immunogen sequence homology: Dog: 100%; Pig: 100%; Rat: 100%; Human: 100%; Mouse: 100%; Guinea pig: 100%; Zebrafish: 79%

**Protein Families:** Transmembrane

**Product images:**



Host: Rabbit; Target Name: CNIH2; Sample Tissue: Placenta lysates; Antibody Dilution: 1.0ug/ml