

Product datasheet for **TA331543**

GDPD1 Rabbit Polyclonal Antibody

Product data:

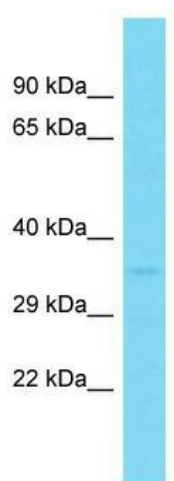
Product Type:	Primary Antibodies
Applications:	WB
Recommended Dilution:	WB
Reactivity:	Human
Host:	Rabbit
Isotype:	IgG
Clonality:	Polyclonal
Immunogen:	The immunogen for Anti-GDPD1 Antibody is: synthetic peptide directed towards the C-terminal region of Human GDPD1. Synthetic peptide located within the following region: IWLSDLLLRKALFDHLTARGIQVYIWVLNNEEQEYKRAFDLGATGVMTDY
Formulation:	Liquid. Purified antibody supplied in 1x PBS buffer with 0.09% (w/v) sodium azide and 2% sucrose. <i>Note that this product is shipped as lyophilized powder to China customers.</i>
Conjugation:	Unconjugated
Storage:	Store at -20°C as received.
Stability:	Stable for 12 months from date of receipt.
Predicted Protein Size:	35 kDa
Gene Name:	glycerophosphodiester phosphodiesterase domain containing 1
Database Link:	NP_872375 Entrez Gene 284161 Human Q8N9F7
Background:	This gene encodes a member of the glycerophosphodiester phosphodiesterase family of enzymes that catalyze the hydrolysis of deacylated glycerophospholipids to glycerol phosphate and alcohol. The encoded protein is localized to the cytoplasm and concentrates near the perinuclear region. Alternative splicing results in multiple transcript variants.
Synonyms:	GDE4
Note:	Immunogen sequence homology: Dog: 100%; Pig: 100%; Horse: 100%; Human: 100%; Rat: 93%; Mouse: 93%; Rabbit: 93%; Guinea pig: 93%



[View online »](#)

Protein Families: Transmembrane

Product images:



Host: Rabbit; Target Name: GDPD1; Sample Tissue: Fetal Brain lysates; Antibody Dilution: 1.0ug/ml