

Product datasheet for **TA331542**

FAM101B (RFLNB) Rabbit Polyclonal Antibody

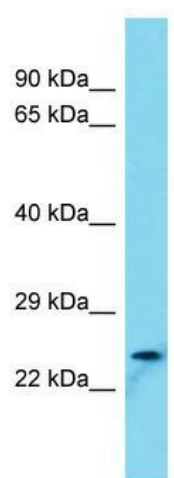
Product data:

Product Type:	Primary Antibodies
Applications:	WB
Recommended Dilution:	WB
Reactivity:	Human
Host:	Rabbit
Isotype:	IgG
Clonality:	Polyclonal
Immunogen:	The immunogen for Anti-FAM101B Antibody is: synthetic peptide directed towards the N-terminal region of Human FAM101B. Synthetic peptide located within the following region: VPELVDAKKKGDGVLDPDPSGLPPSPSPSHWGLAAGGGGGERAAAPGTLE
Formulation:	Liquid. Purified antibody supplied in 1x PBS buffer with 0.09% (w/v) sodium azide and 2% sucrose. <i>Note that this product is shipped as lyophilized powder to China customers.</i>
Conjugation:	Unconjugated
Storage:	Store at -20°C as received.
Stability:	Stable for 12 months from date of receipt.
Predicted Protein Size:	24 kDa
Gene Name:	family with sequence similarity 101 member B
Database Link:	NP_874364 Entrez Gene 359845 Human Q8N5W9
Background:	The function of this protein remains unknown.
Synonyms:	CFM1
Note:	Immunogen sequence homology: Dog: 100%; Pig: 100%; Rat: 100%; Human: 100%; Mouse: 100%



[View online »](#)

Product images:



Host: Rabbit; Target Name: FAM101B; Sample
Tissue: U937 Whole Cell lysates; Antibody
Dilution: 1.0ug/ml