

## Product datasheet for TA331540

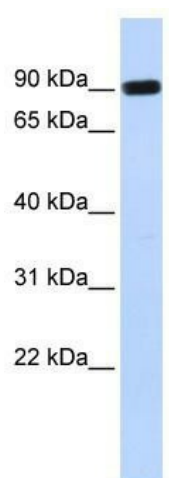
### HECTD2 Rabbit Polyclonal Antibody

#### Product data:

Product Type:	Primary Antibodies
Applications:	WB
Recommended Dilution:	WB
Reactivity:	Human
Host:	Rabbit
Isotype:	IgG
Clonality:	Polyclonal
Immunogen:	The immunogen for Anti-HECTD2 Antibody: synthetic peptide directed towards the middle region of human HECTD2. Synthetic peptide located within the following region: ALMLLRPEEVEILVCGSPDLDMHALQRSTQYDGYAKDILTIKYFWDVVLG
Formulation:	Liquid. Purified antibody supplied in 1x PBS buffer with 0.09% (w/v) sodium azide and 2% sucrose.
Conjugation:	Unconjugated
Storage:	Store at -20°C as received.
Stability:	Stable for 12 months from date of receipt.
Predicted Protein Size:	88 kDa
Gene Name:	HECT domain E3 ubiquitin protein ligase 2
Database Link:	<a href="#">NP_877497</a> <a href="#">Entrez Gene 143279 Human</a> <a href="#">Q5U5R9</a>
Background:	HECTD2 is a probable E3 ubiquitin-protein ligase which accepts ubiquitin from an E2 ubiquitin-conjugating enzyme in the form of a thioester and then directly transfers the ubiquitin to targeted substrates.
Synonyms:	FLJ16050
Note:	Immunogen sequence homology: Dog: 100%; Pig: 100%; Rat: 100%; Horse: 100%; Human: 100%; Mouse: 100%; Bovine: 100%; Rabbit: 100%; Guinea pig: 100%
Protein Families:	Druggable Genome


[View online »](#)

## Product images:



WB Suggested Anti-HECTD2 Antibody Titration:  
0.2-1 ug/ml; ELISA Titer: 1: 62500; Positive  
Control: MCF7 cell lysate