

Product datasheet for **TA331538**

Polyserase1 (TMPRSS9) Rabbit Polyclonal Antibody

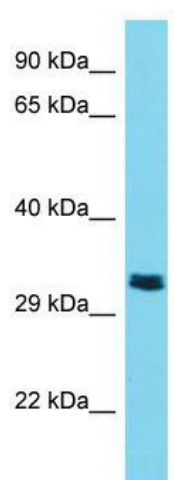
Product data:

Product Type:	Primary Antibodies
Applications:	WB
Recommended Dilution:	WB
Reactivity:	Human
Host:	Rabbit
Isotype:	IgG
Clonality:	Polyclonal
Immunogen:	The immunogen for Anti-TMPRSS9 Antibody is: synthetic peptide directed towards the C-terminal region of Human TMPRSS9. Synthetic peptide located within the following region: PVGRKCMISGWGNTQEGNATKPELLQKASVGIIDQKTCVLYNFSLTDRM
Formulation:	Liquid. Purified antibody supplied in 1x PBS buffer with 0.09% (w/v) sodium azide and 2% sucrose. <i>Note that this product is shipped as lyophilized powder to China customers.</i>
Conjugation:	Unconjugated
Storage:	Store at -20°C as received.
Stability:	Stable for 12 months from date of receipt.
Predicted Protein Size:	26 kDa
Gene Name:	transmembrane protease, serine 9
Database Link:	NP_892018 Entrez Gene 360200 Human Q7Z410
Background:	Serase-1 and serase-2 are serine proteases that hydrolyze the peptides N-t-Boc-Gln-Ala-Arg-AMC and N-t-Boc-Gln-Gly-Arg-AMC. In contrast, N-t-Boc-Ala-Phe-Lys-AMC and N-t-Boc-Ala-Pro-Ala-AMC are not significantly hydrolyzed.
Synonyms:	FLJ16193
Note:	Immunogen sequence homology: Human: 100%; Dog: 93%; Pig: 93%; Rat: 93%; Bovine: 93%; Horse: 86%; Mouse: 86%; Guinea pig: 86%
Protein Families:	Druggable Genome, Transmembrane



[View online »](#)

Product images:



Host: Rabbit; Target Name: TMPRSS9; Sample
Tissue: Jurkat Whole Cell lysates; Antibody
Dilution: 1.0ug/ml