

Product datasheet for **TA331537**

Marapsin2 (PRSS38) Rabbit Polyclonal Antibody

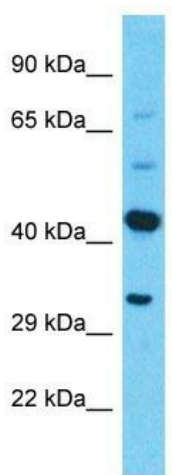
Product data:

Product Type:	Primary Antibodies
Applications:	WB
Recommended Dilution:	WB
Reactivity:	Human
Host:	Rabbit
Isotype:	IgG
Clonality:	Polyclonal
Immunogen:	The immunogen for Anti-PRSS38 Antibody is: synthetic peptide directed towards the C-terminal region of Human PRSS38. Synthetic peptide located within the following region: SESVLPVCLATPEVNLTSA NCWATGWGLVSKQGETSDELQEMQLPLILEP
Formulation:	Liquid. Purified antibody supplied in 1x PBS buffer with 0.09% (w/v) sodium azide and 2% sucrose.
Conjugation:	Unconjugated
Storage:	Store at -20°C as received.
Stability:	Stable for 12 months from date of receipt.
Predicted Protein Size:	35 kDa
Gene Name:	protease, serine 38
Database Link:	NP_898885 Entrez Gene 339501 Human A1L453
Background:	The function of this protein remains unknown.
Synonyms:	MPN2
Note:	Immunogen sequence homology: Human: 100%
Protein Families:	Druggable Genome



[View online »](#)

Product images:



Host: Rabbit
Target Name: PRSS38
Sample Tissue: ACHN Cell Lysate
Antibody Dilution: 1.0µg/ml

Host: Rabbit; Target Name: PRSS38; Sample
Tissue: ACHN Whole Cell lysates; Antibody
Dilution: 1.0ug/ml