

Product datasheet for **TA331534**

C14orf43 (ELMSAN1) Rabbit Polyclonal Antibody

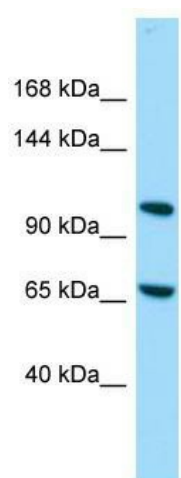
Product data:

Product Type:	Primary Antibodies
Applications:	WB
Recommended Dilution:	WB
Reactivity:	Human
Host:	Rabbit
Isotype:	IgG
Clonality:	Polyclonal
Immunogen:	The immunogen for Anti-C14orf43 Antibody is: synthetic peptide directed towards the C-terminal region of Human C14orf43. Synthetic peptide located within the following region: NAPGSAGGQASEKPREGTGKSRRALPFSEKKKKTETFSKTQNQENTFPCK
Formulation:	Liquid. Purified antibody supplied in 1x PBS buffer with 0.09% (w/v) sodium azide and 2% sucrose. <i>Note that this product is shipped as lyophilized powder to China customers.</i>
Conjugation:	Unconjugated
Storage:	Store at -20°C as received.
Stability:	Stable for 12 months from date of receipt.
Predicted Protein Size:	115 kDa
Gene Name:	ELM2 and Myb/SANT domain containing 1
Database Link:	NP_919254 Entrez Gene 91748 Human Q6PJG2
Background:	The function of this protein remains unknown.
Synonyms:	C14orf43; C14orf117; c14_5541; LSR68; MIDEAS
Note:	Immunogen sequence homology: Human: 100%; Dog: 93%; Rat: 93%; Bovine: 93%; Pig: 92%; Guinea pig: 86%; Mouse: 85%; Rabbit: 85%; Horse: 79%



[View online »](#)

Product images:



Host: Rabbit; Target Name: C14orf43; Sample
Tissue: 721_B Whole Cell lysates; Antibody
Dilution: 1.0ug/ml