

Product datasheet for **TA331533**

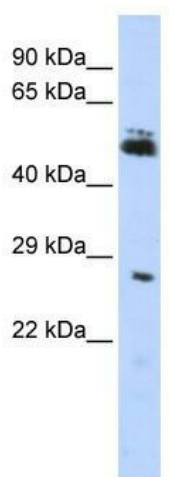
LOC285498 (RNF212) Rabbit Polyclonal Antibody

Product data:

Product Type:	Primary Antibodies
Applications:	WB
Recommended Dilution:	WB
Reactivity:	Human
Host:	Rabbit
Isotype:	IgG
Clonality:	Polyclonal
Immunogen:	The immunogen for Anti-RNF212 Antibody: synthetic peptide directed towards the middle region of human RNF212. Synthetic peptide located within the following region: LCKKYSRETSQILEFQEKHRKLLAFYREKISRLEESLRKSVLQIEQLQS
Formulation:	Liquid. Purified antibody supplied in 1x PBS buffer with 0.09% (w/v) sodium azide and 2% sucrose.
Conjugation:	Unconjugated
Storage:	Store at -20°C as received.
Stability:	Stable for 12 months from date of receipt.
Predicted Protein Size:	26 kDa
Gene Name:	ring finger protein 212
Database Link:	NP_919420 Entrez Gene 285498 Human Q495C1
Background:	RNF212 contains 1 RING-type zinc finger. The function of the RNF212 protein remains unknown.
Synonyms:	ZHP3
Note:	Immunogen sequence homology: Human: 100%; Mouse: 92%; Rabbit: 92%; Dog: 86%



[View online »](#)

Product images:

WB Suggested Anti-RNF212 Antibody Titration:
0.2-1 ug/ml; ELISA Titer: 1: 12500; Positive
Control: HepG2 cell lysate