

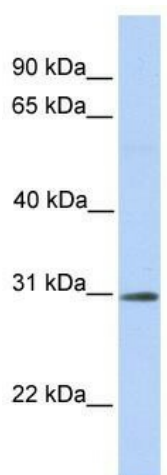
## Product datasheet for TA331532

### RNF148 Rabbit Polyclonal Antibody

#### Product data:

Product Type:	Primary Antibodies
Applications:	WB
Recommended Dilution:	WB
Reactivity:	Human
Host:	Rabbit
Isotype:	IgG
Clonality:	Polyclonal
Immunogen:	The immunogen for Anti-RNF148 Antibody: synthetic peptide directed towards the C terminal of human RNF148. Synthetic peptide located within the following region: PNSFTRRRSQIKTDVKKAIDQLQLRVLKEGDEELDLNEDNCVVCFDYKP
Formulation:	Liquid. Purified antibody supplied in 1x PBS buffer with 0.09% (w/v) sodium azide and 2% sucrose. <i>Note that this product is shipped as lyophilized powder to China customers.</i>
Conjugation:	Unconjugated
Storage:	Store at -20°C as received.
Stability:	Stable for 12 months from date of receipt.
Predicted Protein Size:	34 kDa
Gene Name:	ring finger protein 148
Database Link:	<a href="#">NP_932351</a> <a href="#">Entrez Gene 378925 Human</a> <a href="#">Q8N7C7</a>
Background:	RNF148 is a single-pass membrane protein. It contains 1 PA (protease associated) domain and 1 RING-type zinc finger. The exact function of RNF148 remains unknown.
Synonyms:	MGC35222
Note:	Immunogen sequence homology: Human: 100%; Rat: 85%; Yeast: 82%


[View online »](#)

**Product images:**


WB Suggested Anti-RNF148 Antibody Titration:  
0.2-1 ug/ml; Positive Control: Human brain