

## Product datasheet for TA331530

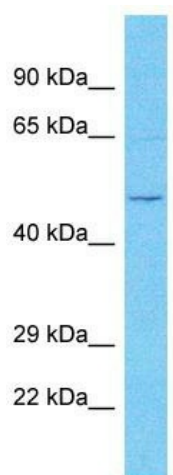
### OVCH2 Rabbit Polyclonal Antibody

#### Product data:

Product Type:	Primary Antibodies
Applications:	WB
Recommended Dilution:	WB
Reactivity:	Human
Host:	Rabbit
Isotype:	IgG
Clonality:	Polyclonal
Immunogen:	The immunogen for Anti-OVCH2 Antibody is: synthetic peptide directed towards the C-terminal region of Human OVCH2. Synthetic peptide located within the following region: VTVHSDVERKKEIARLCGYDVPTPVLSPSSIMLISFHSDENGTCRGFQAT
Formulation:	Liquid. Purified antibody supplied in 1x PBS buffer with 0.09% (w/v) sodium azide and 2% sucrose.
Conjugation:	Unconjugated
Storage:	Store at -20°C as received.
Stability:	Stable for 12 months from date of receipt.
Predicted Protein Size:	57 kDa
Gene Name:	ovochymase 2 (gene/pseudogene)
Database Link:	<a href="#">NP_937828</a> <a href="#">Entrez Gene 341277 Human</a>
Background:	The function of this protein remains unknown.
Synonyms:	OVTN
Note:	Immunogen sequence homology: Human: 100%; Bovine: 93%; Pig: 86%; Guinea pig: 86%; Rat: 79%; Horse: 79%; Mouse: 79%; Rabbit: 79%
Protein Families:	Druggable Genome


[View online »](#)

## Product images:



Host: Rabbit  
Target Name: OVCH2  
Sample Tissue: Jurkat Cell Lysate  
Antibody Dilution: 1.0µg/ml

Host: Rabbit; Target Name: OVCH2; Sample Tissue: Jurkat Whole Cell lysates; Antibody Dilution: 1.0ug/ml