

Product datasheet for **TA331528**

GBP6 Rabbit Polyclonal Antibody

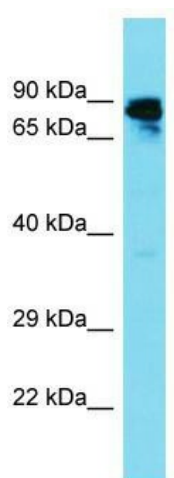
Product data:

Product Type:	Primary Antibodies
Applications:	WB
Recommended Dilution:	WB
Reactivity:	Human
Host:	Rabbit
Isotype:	IgG
Clonality:	Polyclonal
Immunogen:	The immunogen for Anti-GBP6 Antibody is: synthetic peptide directed towards the N-terminal region of Human GBP6. Synthetic peptide located within the following region: MWCVPHPSPKNHTLVLLDTEGLGDVEKGDPKNDSWIFALAVLLCSTFVYN
Formulation:	Liquid. Purified antibody supplied in 1x PBS buffer with 0.09% (w/v) sodium azide and 2% sucrose. <i>Note that this product is shipped as lyophilized powder to China customers.</i>
Conjugation:	Unconjugated
Storage:	Store at -20°C as received.
Stability:	Stable for 12 months from date of receipt.
Predicted Protein Size:	72 kDa
Gene Name:	guanylate binding protein family member 6
Database Link:	NP_940862 Entrez Gene 163351 Human Q6ZN66
Background:	Guanylate-binding proteins, such as GBP6, are induced by interferon and hydrolyze GTP to both GDP and GMP.
Synonyms:	DKFZp686G0786; FLJ39135
Note:	Immunogen sequence homology: Pig: 100%; Rat: 100%; Horse: 100%; Human: 100%; Mouse: 100%; Bovine: 100%; Rabbit: 100%; Guinea pig: 100%; Dog: 93%; Zebrafish: 85%



[View online »](#)

Product images:



Host: Rabbit; Target Name: GBP6; Sample Tissue: Fetal Liver lysates; Antibody Dilution: 1.0ug/ml