

Product datasheet for **TA331527**

LONRF2 Rabbit Polyclonal Antibody

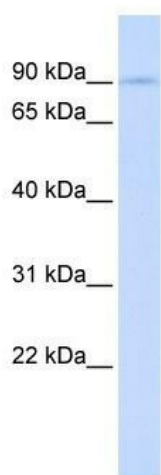
Product data:

Product Type:	Primary Antibodies
Applications:	WB
Recommended Dilution:	WB
Reactivity:	Human
Host:	Rabbit
Isotype:	IgG
Clonality:	Polyclonal
Immunogen:	The immunogen for Anti-LONRF2 Antibody: synthetic peptide directed towards the middle region of human LONRF2. Synthetic peptide located within the following region: IGISRFRVLSHRHRDGYNTADIEYLEDEKVEGPEYEELAALHDSVHQSV
Formulation:	Liquid. Purified antibody supplied in 1x PBS buffer with 0.09% (w/v) sodium azide and 2% sucrose. <i>Note that this product is shipped as lyophilized powder to China customers.</i>
Conjugation:	Unconjugated
Storage:	Store at -20°C as received.
Stability:	Stable for 12 months from date of receipt.
Predicted Protein Size:	84 kDa
Gene Name:	LON peptidase N-terminal domain and ring finger 2
Database Link:	NP_940863 Entrez Gene 164832 Human Q1L5Z9
Background:	LONRF2 contains 1 Lon domain, 1 RING-type zinc finger and 6 TPR repeats. The function of the LONRF2 protein remains unknown.
Synonyms:	RNF192
Note:	Immunogen sequence homology: Dog: 100%; Pig: 100%; Rat: 100%; Horse: 100%; Human: 100%; Mouse: 100%; Bovine: 90%; Rabbit: 90%; Guinea pig: 90%
Protein Families:	Druggable Genome



[View online »](#)

Product images:



WB Suggested Anti-LONRF2 Antibody Titration:
0.2-1 ug/ml; ELISA Titer: 1: 62500; Positive
Control: Human Placenta