

## Product datasheet for **TA331525**

### PRSS55 Rabbit Polyclonal Antibody

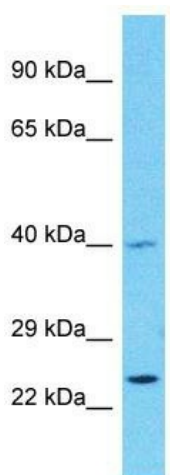
#### Product data:

Product Type:	Primary Antibodies
Applications:	WB
Recommended Dilution:	WB
Reactivity:	Human
Host:	Rabbit
Isotype:	IgG
Clonality:	Polyclonal
Immunogen:	The immunogen for Anti-PRSS55 Antibody is: synthetic peptide directed towards the C-terminal region of Human PRSS55. Synthetic peptide located within the following region: SWGKSCGEKNTPGIYTSLVNYNLWIEKVTQLEGRPFNAEKRRTSVKQKPM
Formulation:	Liquid. Purified antibody supplied in 1x PBS buffer with 0.09% (w/v) sodium azide and 2% sucrose.
Conjugation:	Unconjugated
Storage:	Store at -20°C as received.
Stability:	Stable for 12 months from date of receipt.
Predicted Protein Size:	36 kDa
Gene Name:	protease, serine 55
Database Link:	<a href="#">NP_940866</a> <a href="#">Entrez Gene 203074 Human</a> <a href="#">Q6UWB4</a>
Background:	This gene encodes a member of a group of membrane-anchored chymotrypsin (S1)-like serine proteases. The encoded protein is primarily expressed in the Leydig and Sertoli cells of the testis and may be involved in male fertility. Alternate splicing results in multiple transcript variants.
Synonyms:	CT153; T-SP1; TSP1; UNQ9391
Note:	Immunogen sequence homology: Human: 100%
Protein Families:	Druggable Genome



[View online »](#)

## Product images:



Host: Rabbit  
Target Name: PRSS55  
Sample Tissue: HepG2 Cell Lysate  
Antibody Dilution: 1.0 $\mu$ g/ml

Host: Rabbit; Target Name: PRSS55; Sample Tissue: HepG2 Whole Cell lysates; Antibody Dilution: 1.0 $\mu$ g/ml