

Product datasheet for **TA331523**

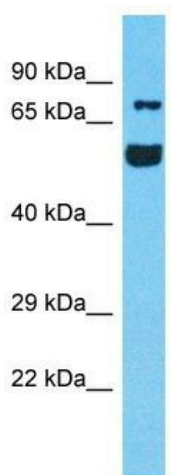
RUFY4 Rabbit Polyclonal Antibody

Product data:

Product Type:	Primary Antibodies
Applications:	WB
Recommended Dilution:	WB
Reactivity:	Human
Host:	Rabbit
Isotype:	IgG
Clonality:	Polyclonal
Immunogen:	The immunogen for Anti-RUFY4 Antibody is: synthetic peptide directed towards the C-terminal region of Human RUFY4. Synthetic peptide located within the following region: VSLQDEIKSLRLGLRKAAEEQAQRQEQLLREQEGELQALREQLSRCQEERA
Formulation:	Liquid. Purified antibody supplied in 1x PBS buffer with 0.09% (w/v) sodium azide and 2% sucrose.
Conjugation:	Unconjugated
Storage:	Store at -20°C as received.
Stability:	Stable for 12 months from date of receipt.
Predicted Protein Size:	62 kDa
Gene Name:	RUN and FYVE domain containing 4
Database Link:	NP_940885 Entrez Gene 285180 Human Q6ZNE9
Background:	The function of this protein remains unknown.
Synonyms:	ZFYVE31
Note:	Immunogen sequence homology: Pig: 100%; Human: 100%; Guinea pig: 100%; Dog: 79%; Rat: 79%; Horse: 79%; Mouse: 79%; Bovine: 79%; Rabbit: 79%



[View online »](#)

Product images:


Host: Rabbit

Target Name: RUFY4

Sample Tissue: Hela Cell Lysate

Antibody Dilution: 1.0µg/ml

Host: Rabbit; Target Name: RUFY4; Sample
Tissue: Hela Whole Cell lysates; Antibody Dilution:
1.0ug/ml