

Product datasheet for **TA331522**

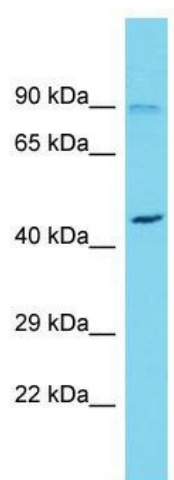
FAM73A (MIGA1) Rabbit Polyclonal Antibody

Product data:

Product Type:	Primary Antibodies
Applications:	WB
Recommended Dilution:	WB
Reactivity:	Human
Host:	Rabbit
Isotype:	IgG
Clonality:	Polyclonal
Immunogen:	The immunogen for Anti-FAM73A Antibody is: synthetic peptide directed towards the N-terminal region of Human FAM73A. Synthetic peptide located within the following region: SRQNLTLSLSTKDKGSQVCNYANGGLFSKYSQSLASVQSVNSCHSC
Formulation:	Liquid. Purified antibody supplied in 1x PBS buffer with 0.09% (w/v) sodium azide and 2% sucrose.
Conjugation:	Unconjugated
Storage:	Store at -20°C as received.
Stability:	Stable for 12 months from date of receipt.
Predicted Protein Size:	42 kDa
Gene Name:	family with sequence similarity 73 member A
Database Link:	NP_940951 Entrez Gene 374986 Human Q8NAN2
Background:	The function of this protein remains unknown.
Synonyms:	DKFZp686M07166; FLJ35093
Note:	Immunogen sequence homology: Human: 100%; Rat: 93%; Rabbit: 93%; Dog: 86%; Pig: 86%; Mouse: 86%; Bovine: 86%; Horse: 79%; Guinea pig: 79%
Protein Families:	Transmembrane


[View online »](#)

Product images:



Host: Rabbit; Target Name: FAM73A; Sample Tissue: OVCAR-3 Whole Cell lysates; Antibody Dilution: 1.0ug/ml