

Product datasheet for TA331521

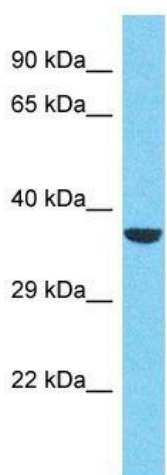
RBM43 Rabbit Polyclonal Antibody

Product data:

Product Type:	Primary Antibodies
Applications:	WB
Recommended Dilution:	WB
Reactivity:	Human
Host:	Rabbit
Isotype:	IgG
Clonality:	Polyclonal
Immunogen:	The immunogen for Anti-RBM43 Antibody is: synthetic peptide directed towards the N-terminal region of Human RBM43. Synthetic peptide located within the following region: VAYVIFKEKKVAENVIRQKKHWLARKTRHAELTVSLRVSHFGDKIFSSVN
Formulation:	Liquid. Purified antibody supplied in 1x PBS buffer with 0.09% (w/v) sodium azide and 2% sucrose. <i>Note that this product is shipped as lyophilized powder to China customers.</i>
Conjugation:	Unconjugated
Storage:	Store at -20°C as received.
Stability:	Stable for 12 months from date of receipt.
Predicted Protein Size:	40 kDa
Gene Name:	RNA binding motif protein 43
Database Link:	NP_940959 Entrez Gene 375287 Human Q6ZSC3
Background:	The function of this protein remains unknown.
Synonyms:	C2orf38
Note:	Immunogen sequence homology: Human: 100%; Horse: 92%; Rat: 79%; Mouse: 79%; Bovine: 79%



[View online »](#)

Product images:

Host: Rabbit
Target Name: RBM43
Sample Tissue: HepG2 Cell Lysate
Antibody Dilution: 1.0 μ g/ml

Host: Rabbit; Target Name: RBM43; Sample
Tissue: HepG2 Whole Cell lysates; Antibody
Dilution: 1.0ug/ml