

Product datasheet for TA331520

LHFPL4 Rabbit Polyclonal Antibody

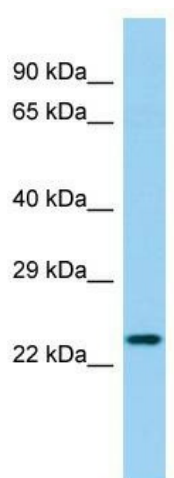
Product data:

Product Type:	Primary Antibodies
Applications:	WB
Recommended Dilution:	WB
Reactivity:	Human
Host:	Rabbit
Isotype:	IgG
Clonality:	Polyclonal
Immunogen:	The immunogen for Anti-LHFPL4 Antibody is: synthetic peptide directed towards the C-terminal region of Human LHFPL4. Synthetic peptide located within the following region: LCLVLGCMIFPDGWD AETIRDMCGAKTGKYS LGDCSVRWAYILAIIGILN
Formulation:	Liquid. Purified antibody supplied in 1x PBS buffer with 0.09% (w/v) sodium azide and 2% sucrose.
Conjugation:	Unconjugated
Storage:	Store at -20°C as received.
Stability:	Stable for 12 months from date of receipt.
Predicted Protein Size:	27 kDa
Gene Name:	lipoma HMGIC fusion partner-like 4
Database Link:	NP_940962 Entrez Gene 375323 Human Q7Z7I7
Background:	This gene is a member of the lipoma HMGIC fusion partner (LHFP) gene family, which is a subset of the superfamily of tetraspan transmembrane protein encoding genes. Mutations in one LHFP-like gene result in deafness in humans and mice, and a second LHFP-like gene is fused to a high-mobility group gene in a translocation-associated lipoma.
Synonyms:	RP11-58B17.2
Note:	Immunogen sequence homology: Pig: 100%; Rat: 100%; Human: 100%; Mouse: 100%; Bovine: 100%; Rabbit: 100%; Guinea pig: 100%; Dog: 93%; Zebrafish: 79%
Protein Families:	Transmembrane



[View online »](#)

Product images:



Host: Rabbit; Target Name: LHFPL4; Sample
Tissue: Fetal Heart lysates; Antibody Dilution:
1.0ug/ml