

Product datasheet for TA331518

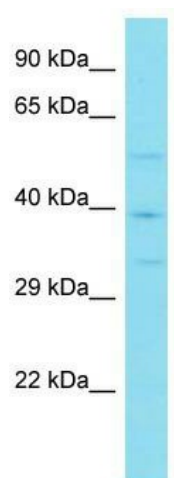
VWC2 Rabbit Polyclonal Antibody

Product data:

Product Type:	Primary Antibodies
Applications:	WB
Recommended Dilution:	WB
Reactivity:	Human
Host:	Rabbit
Isotype:	IgG
Clonality:	Polyclonal
Immunogen:	The immunogen for Anti-VWC2 Antibody is: synthetic peptide directed towards the middle region of Human VWC2. Synthetic peptide located within the following region: YVYPDYRGKGCVDESGFVYAIGEFAPGPSACPCLCTEEGPLCAQPECPR
Formulation:	Liquid. Purified antibody supplied in 1x PBS buffer with 0.09% (w/v) sodium azide and 2% sucrose.
Conjugation:	Unconjugated
Storage:	Store at -20°C as received.
Stability:	Stable for 12 months from date of receipt.
Predicted Protein Size:	36 kDa
Gene Name:	von Willebrand factor C domain containing 2
Database Link:	NP_940972 Entrez Gene 375567 Human Q2TAL6
Background:	This gene encodes a secreted bone morphogenic protein antagonist. The encoded protein is possibly involved in neural function and development and may have a role in cell adhesion.
Synonyms:	PSST739; UNQ739
Note:	Immunogen sequence homology: Dog: 100%; Pig: 100%; Rat: 100%; Horse: 100%; Human: 100%; Mouse: 100%; Bovine: 100%; Rabbit: 100%; Guinea pig: 100%; Zebrafish: 92%



[View online »](#)

Product images:

Host: Rabbit; Target Name: VWC2; Sample Tissue: Jurkat Whole Cell lysates; Antibody Dilution: 1.0ug/ml