

## Product datasheet for TA331517

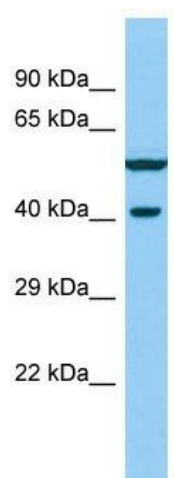
### VWC2 Rabbit Polyclonal Antibody

#### Product data:

Product Type:	Primary Antibodies
Applications:	WB
Recommended Dilution:	WB
Reactivity:	Human
Host:	Rabbit
Isotype:	IgG
Clonality:	Polyclonal
Immunogen:	The immunogen for Anti-VWC2 Antibody is: synthetic peptide directed towards the N-terminal region of Human VWC2. Synthetic peptide located within the following region: LEKLAQAPEQPGQEKREHASRDGPGRVNELGRPARDEGGSGRDWKSLSGR
Formulation:	Liquid. Purified antibody supplied in 1x PBS buffer with 0.09% (w/v) sodium azide and 2% sucrose. <i>Note that this product is shipped as lyophilized powder to China customers.</i>
Conjugation:	Unconjugated
Storage:	Store at -20°C as received.
Stability:	Stable for 12 months from date of receipt.
Predicted Protein Size:	36 kDa
Gene Name:	von Willebrand factor C domain containing 2
Database Link:	<a href="#">NP_940972</a> <a href="#">Entrez Gene 375567 Human</a> <a href="#">Q2TAL6</a>
Background:	This gene encodes a secreted bone morphogenic protein antagonist. The encoded protein is possibly involved in neural function and development and may have a role in cell adhesion.
Synonyms:	PSST739; UNQ739
Note:	Immunogen sequence homology: Pig: 100%; Rat: 100%; Horse: 100%; Human: 100%; Mouse: 100%; Guinea pig: 100%; Bovine: 93%



[View online »](#)

**Product images:**

Host: Rabbit; Target Name: WVC2; Sample Tissue: Fetal Liver lysates; Antibody Dilution: 1.0ug/ml